

We are pleased to provide you with the enclosed information on your lot which represents **part** of the total project final construction plans and final plat. Please be aware that Planned Communities, Inc. is providing this information to assist in your lot review. Field conditions during construction could have necessitated changes in the actual utility construction and/or lot topography which may not be shown on the information provided and must be verified by you. Full final plat information should also be verified from the plat as recorded. The purpose of us providing this information is to assist in preliminary review and evaluation of the lot and final verification of this information is always the responsibility of the purchaser.

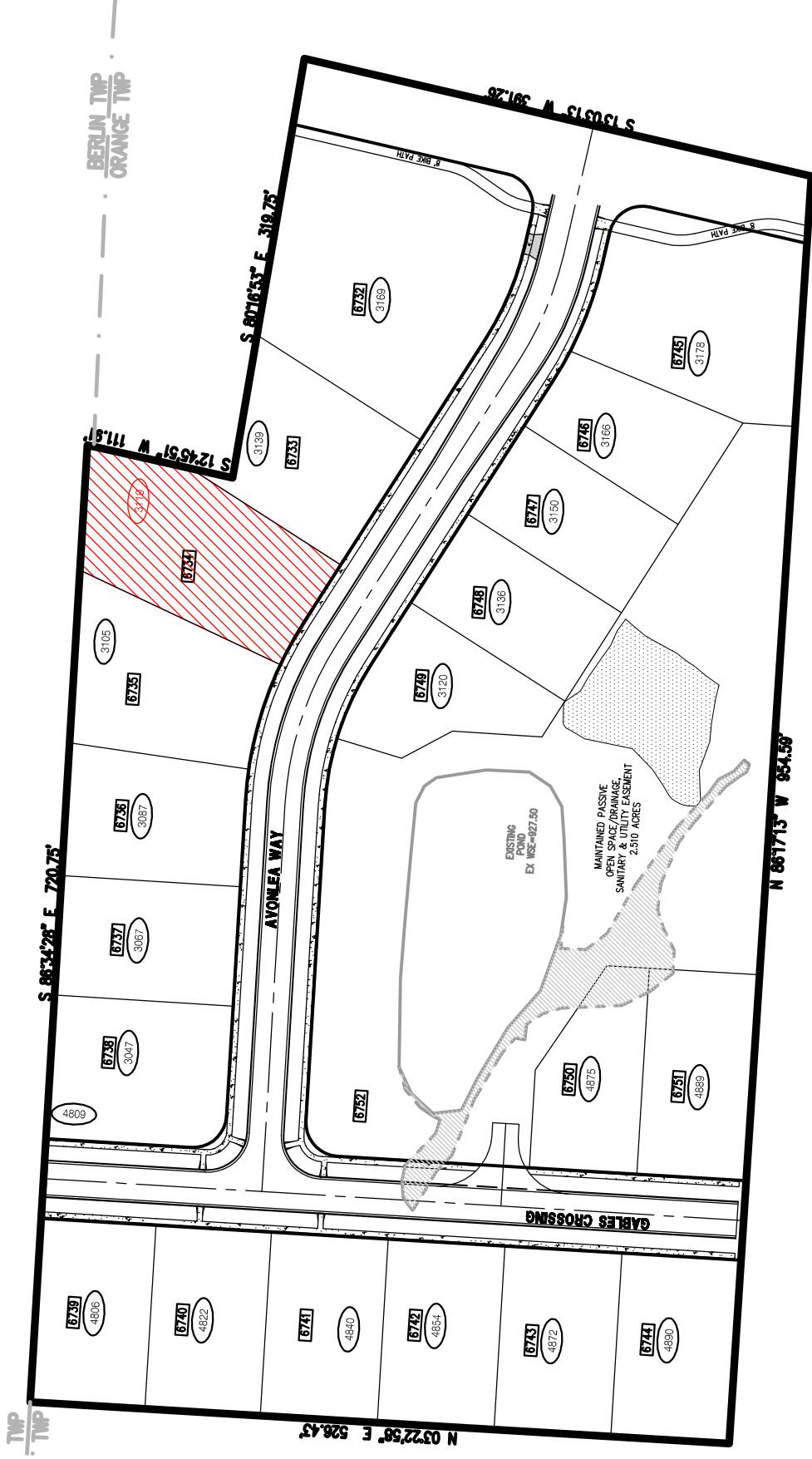
Below are contact numbers or names for some of the agencies that you may need during your lot review:

Delaware County Recorder	740-883-2460
Delaware County Engineer	740-883-2400
Delaware County Sanitary Engineer	740-883-2240
Delaware County Building	740-883-2199
Delco Water Company	740-548-7746
Orange Township	740-548-5430
Floyd Browne Group	740-363-6792
Insight Cable	614-236-1200
Verizon	800-483-4000
American Electric Power	800-277-2177
Gas	Suburban Gas Company
Trash	Orange Township

2006-2007 SCHOOL YEAR

Elementary School - Arrowhead - 2385 Hollenback Road
 Middle School - Shanahan - 814 Shanahan Road
 High School - Olentangy - 675 Lewis Center Road

Note: With redistricting of the Olentangy School District, contact Olentangy New Student Welcome Center at 740-657-4030 to confirm.



We are pleased to provide you with detailed information on this specific lot. Please be aware that the following information is being provided based on the best information available to us at this time. Field conditions during construction could at anytime necessitate changes in the actual utility construction and/or lot topography, which may not be shown on the information provided and must be field verified by you. The plat information, if the plat is not yet recorded, must also be verified by you after the plat is recorded. The purpose of our providing this information is to assist in preliminary review and evaluation of the lot. Final verification of this information is always the responsibility of the purchaser.

AVONLEA
 LOCATION MAP
LOT 6734



Planned Communities, Inc.
 110 Northwoods Colerain, Suite B
 Columbus, OH 43225
 (614) 945-5330



Central Ohio
 740.363.6792
 740.363.6536 fax
 800.325.7647
 Solutions for Your World
 www.FloydBrowne.com

