

We are pleased to provide you with the enclosed information on your lot which represents **part** of the total project final construction plans and final plat. Please be aware that Planned Communities, Inc. is providing this information to assist in your lot review. Field conditions during construction could have necessitated changes in the actual utility construction and/or lot topography which may not be shown on the information provided and must be verified by you. Full final plat information should also be verified from the plat as recorded. The purpose of us providing this information is to assist in preliminary review and evaluation of the lot and final verification of this information is always the responsibility of the purchaser.

Below are contact numbers or names for some of the agencies that you may need during your lot review:

- Delaware County Recorder 740-883-2460
- Delaware County Engineer 740-883-2400
- Delaware County Sanitary Engineer 740-883-2240
- Delaware County Building 740-883-2199
- Delco Water Company 740-548-7746
- Orange Township 740-548-5430
- Floyd Browne Group 740-363-6792
- Insight Cable 614-236-1200
- Verizon 800-483-4000
- American Electric Power 800-277-2177
- Gas Suburban Gas Company
- Trash Orange Township

2006-2007 SCHOOL YEAR

- Elementary School - Arrowhead - 2385 Hollenback Road
- Middle School - Shanahan - 814 Shanahan Road
- High School - Olentangy - 675 Lewis Center Road

Note: With redistricting of the Olentangy School District, contact Olentangy New Student Welcome Center at 740-657-4030 to confirm.

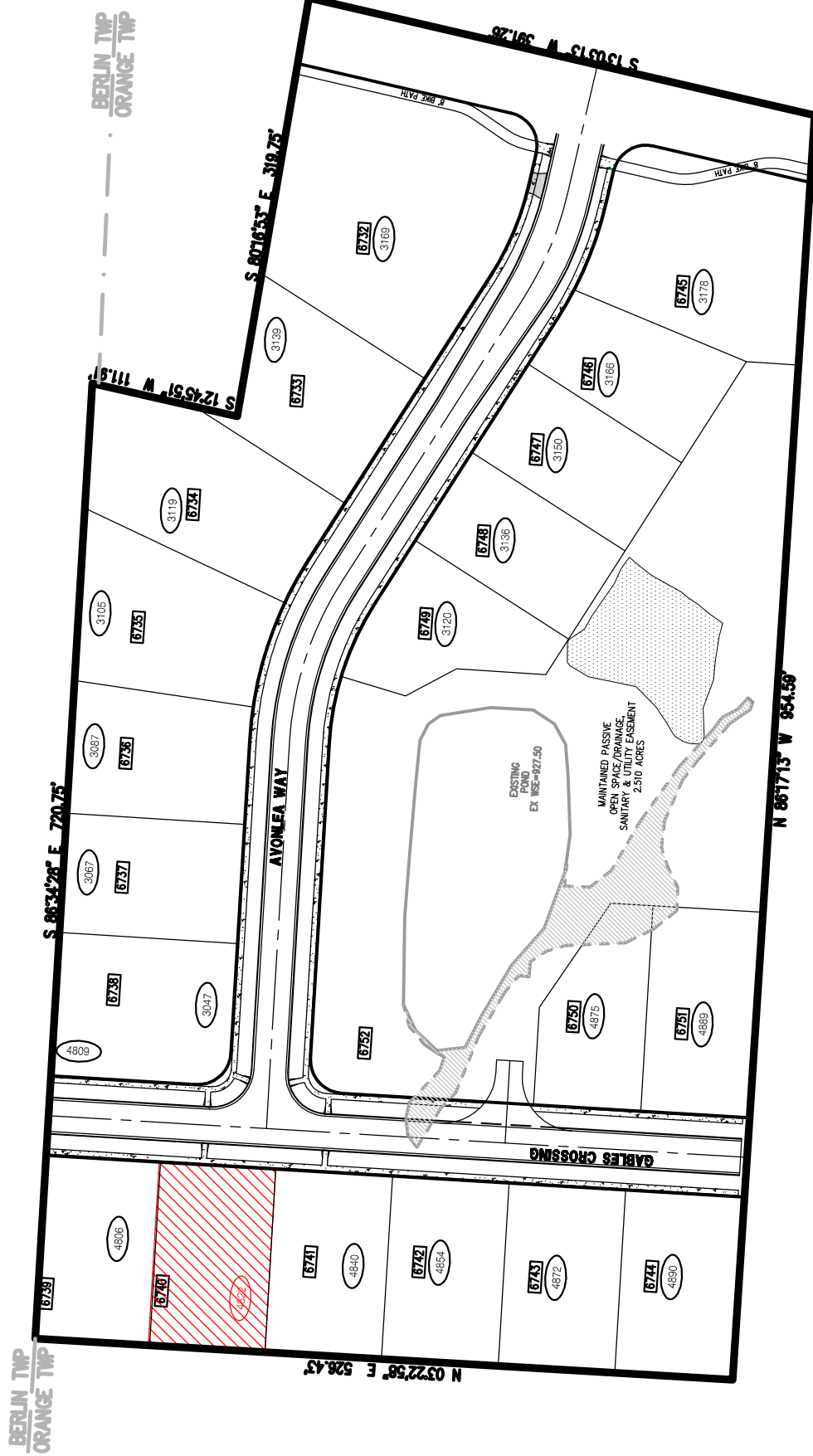


Planned Communities, Inc.  
110 Northwoods Boulevard, Suite B  
Columbus, OH 43225  
(614) 949-5330



Central Ohio  
740.363.6792  
740.363.6536 fax  
800.325.7647

Solutions for Your World  
www.FloydBrowne.com



We are pleased to provide you with detailed information on this specific lot. Please be aware that the following information is being provided based on the best information available to us at this time. Field conditions during construction could at anytime necessitate changes in the actual utility construction and/or lot topography, which may not be shown on the information provided and must be field verified by you. The plat information, if the plat is not yet recorded, must also be verified by you after the plat is recorded. The purpose of our providing this information is to assist in preliminary review and evaluation of the lot. Final verification of this information is always the responsibility of the purchaser.

AVONLEA  
LOCATION MAP  
LOT 6740

