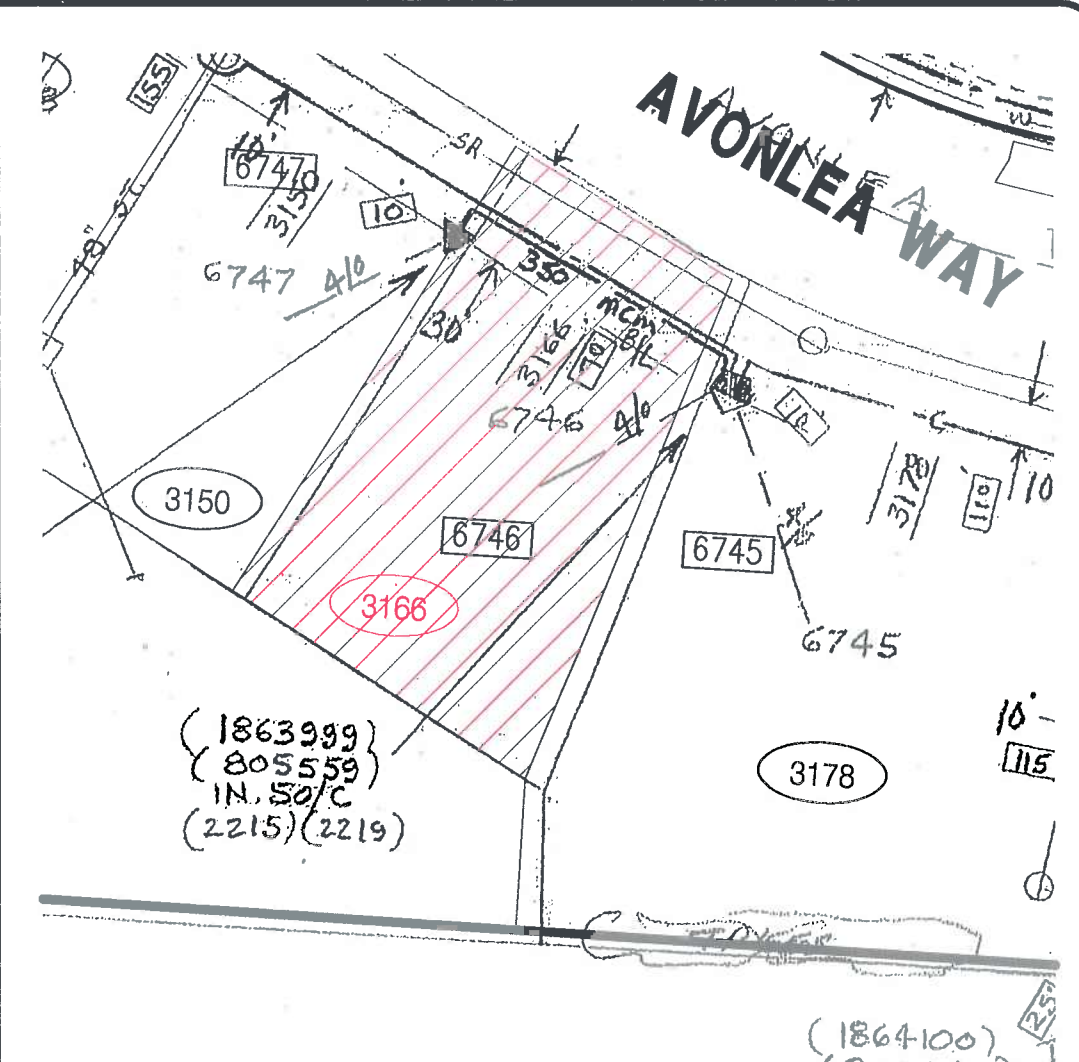
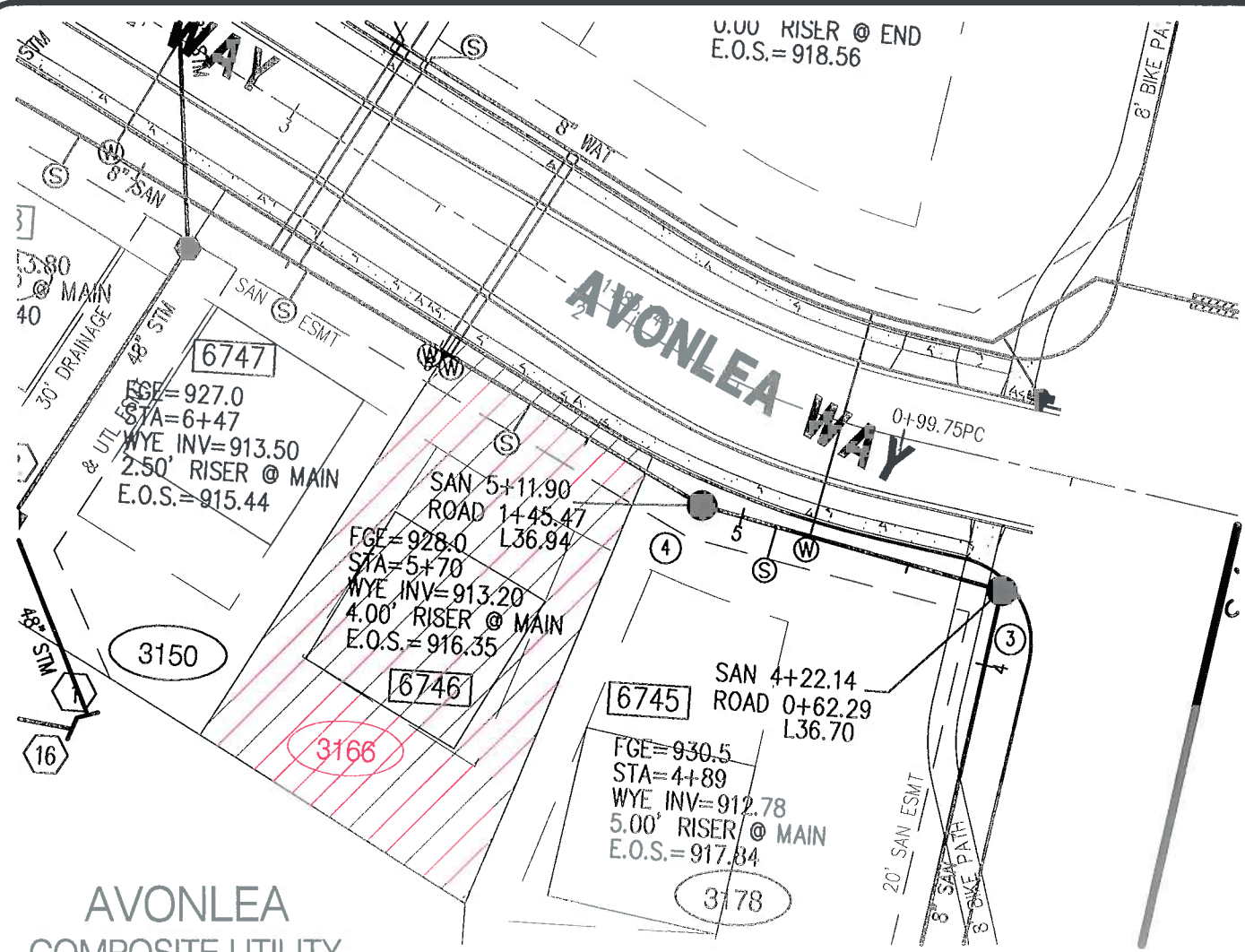


J:\DEL\G\CLIENT\PLANNED COMMUNITIES\03\PCI LOT FOLDERS\AVONLEA_PDF'S\LOT 3166\AVONLEA_LOT 3166.DWG - 3/13/2008 12:03:24 PM



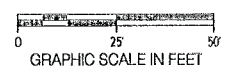
AVONLEA
COMPOSITE UTILITY
LOT 6746

NOTE: EXCLUDES ELECTRIC EASEMENTS AND ALL GAS, CABLE AND PHONE INFORMATION

LEGEND			
SAN	SANITARY	STM	STORM
○	SANITARY MANHOLE	①	STORM NUMBER
①	SANITARY NUMBER	●	STORM MANHOLE
—	WATERLINE	—	STORM INLET
⊕	FIRE HYDRANT	■	STORM CATCH BASIN
⊕	WATER VALVE	-850-	EXISTING CONTOUR
—	EXISTING FENCE	—	JURISDICTIONAL STREAM
■	DETENTION AREAS	—SAN—	EX SANITARY SEWER
○	EX SANITARY MANHOLE	○	EX WETLAND
⊕	EXISTING WATER METER	⊕	EXISTING MAILBOX
—	EXISTING TREELINE		

We are pleased to provide you with detailed information on this specific lot. Please be aware that the following information is being provided based on the best information available to us at this time. Field conditions during construction could at anytime necessitate changes in the actual utility construction and/or lot topography, which may not be shown on the information provided and must be field verified by you. The plat information, if the plat is not yet recorded, must also be verified by you after the plat is recorded. The purpose of our providing this information is to assist in preliminary review and evaluation of the lot. Final verification of this information is always the responsibility of the purchaser.

APPROXIMATE ELECTRIC LOCATION
NOT TO SCALE



Planned Communities, Inc.
110 Northwoods Boulevard, Suite D
Columbus, Ohio 43235
(614) 848-5330

Floyd Browne Group
Central Ohio
740.363.6792
740.363.6536 fax
800.325.7647
Solutions for Your World
www.FloydBrowne.com

010-03300-010 OCTOBER, 2004
SHEET 3 OF 4